

Irrigation Efficiencies Grant Program



October 4, 2011
Anna Lael, District Manager
Kittitas County Conservation District

Kittitas County Conservation District

- Dust Bowl
- Soil Conservation Act of 1935
- Political Subdivision of State (RCW 89.08), organized in 1942



Kittitas County Conservation District

- Crops
 - Timothy Hay
 - Alfalfa Hay
 - Corn/Sudan Grass/Grains
 - Beans and Potatoes
 - Pasture

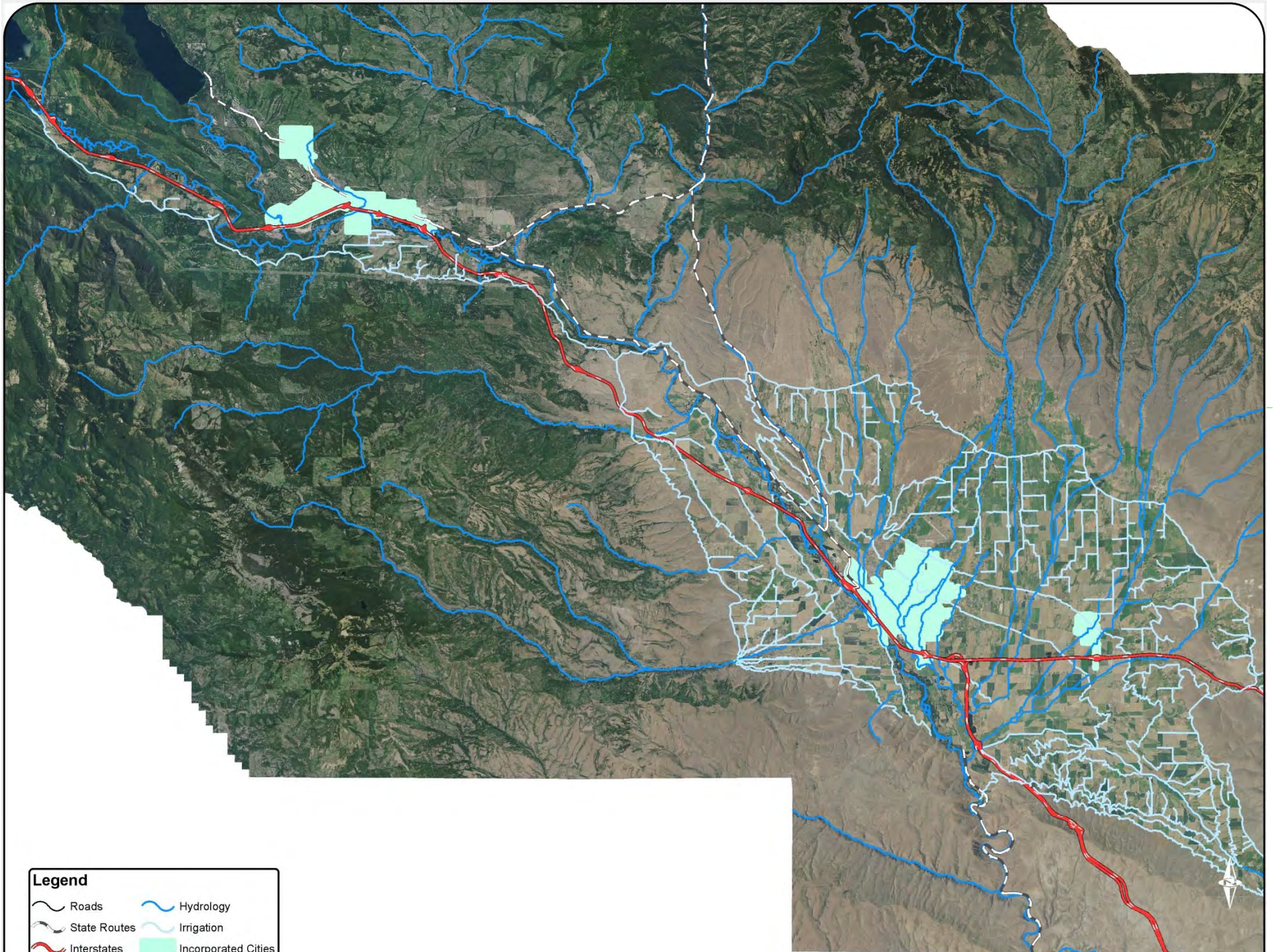










Kittitas County Conservation District

- Irrigation Water Sources
 - Irrigation Districts/Companies
 - Storage Reservoirs
 - Individual Creek Rights
 - Irrigation Water Delivery
 - Earthen lined ditches
 - On-Farm Irrigation Methods
 - Flood
 - Rill
 - Sprinkler
-





Legend

 Roads	 Hydrology
 State Routes	 Irrigation
 Interstates	 Incorporated Cities



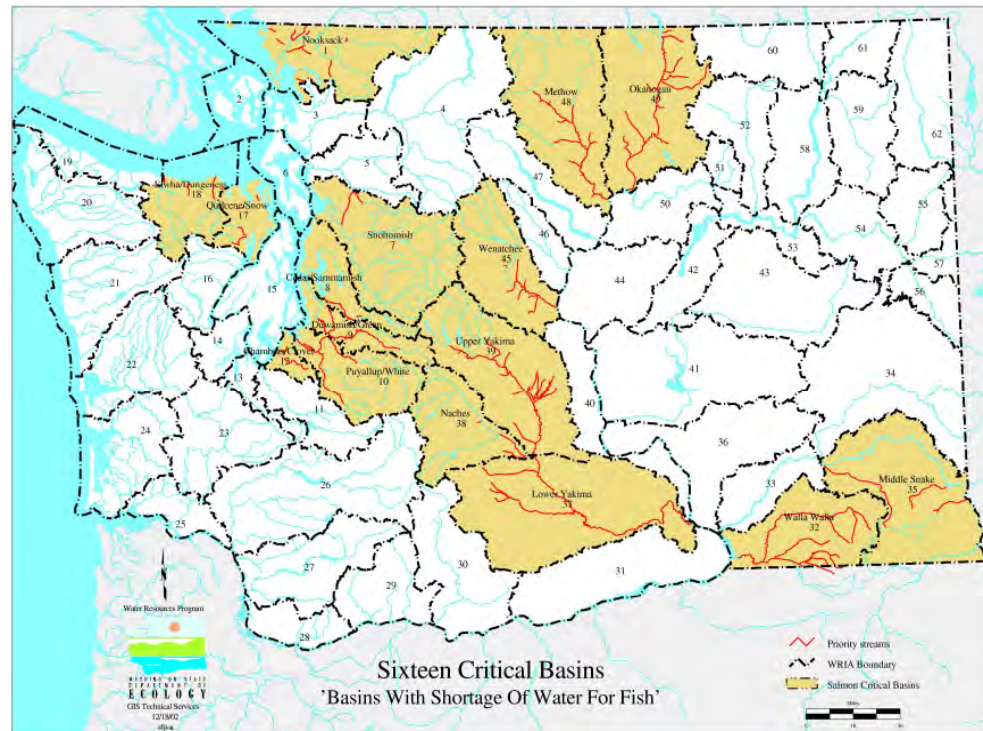


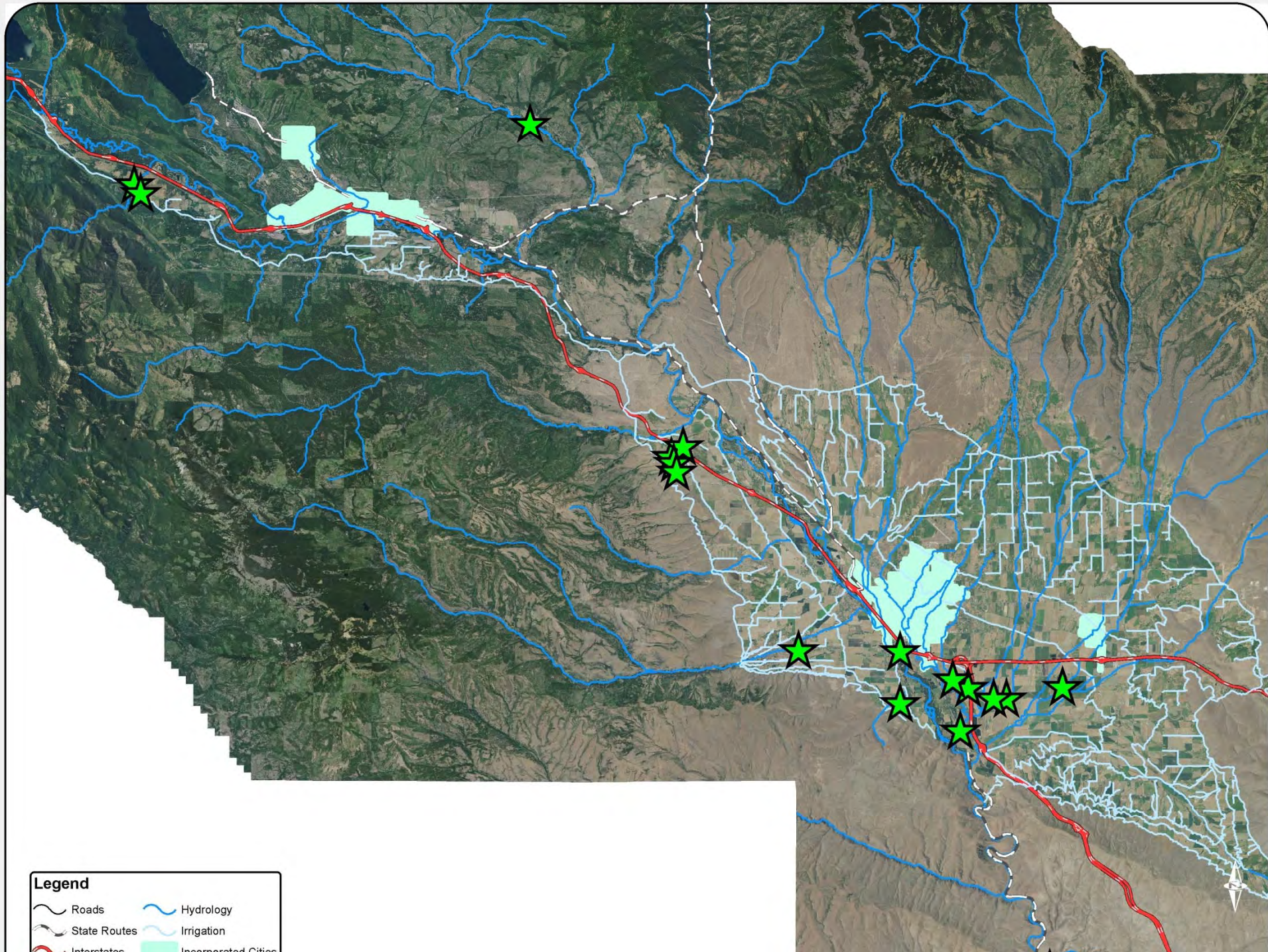










Irrigation Efficiencies Program (IEP)

- 2001 Drought
 - 16 Fish Critical Basins (10 Conservation Districts)
 - Trust Water Rights Program





Legend

- | | |
|--------------------------------------------------------------------------------------------------|---------------------------------------------------------------------------------------------------------|
|  Roads |  Hydrology |
|  State Routes |  Irrigation |
|  Interstates |  Incorporated Cities |

Kittitas County Conservation District

Contracts	Acres	CFS to Trust	Acre-Feet to Trust
Lmuma Creek	192	0.25	90
Yakima River	962	1.26	446
Wilson Creek	608	9.45	2,042
Manastash Creek	84	0.89	153
Taneum Creek	355	3.47	383
Teaway River	43	0.25	61
Big Creek	95	1.09	301
Totals	2,339	16.66	3,476



Water Quantity

- Focus on flow limited streams
 - Priority Stream reaches in each District
- Trust Water Rights Program

 - Cost Share % = Saved Water to Trust %
- Fish benefit
 - WDFW concurrence for each project







Fish Screens

- IEGP requires irrigation diversions to be properly screen
- Fish screen and fish passage not IEGP eligible expenses
- Forces cooperation between programs and funding to address “big picture”









Water Quality

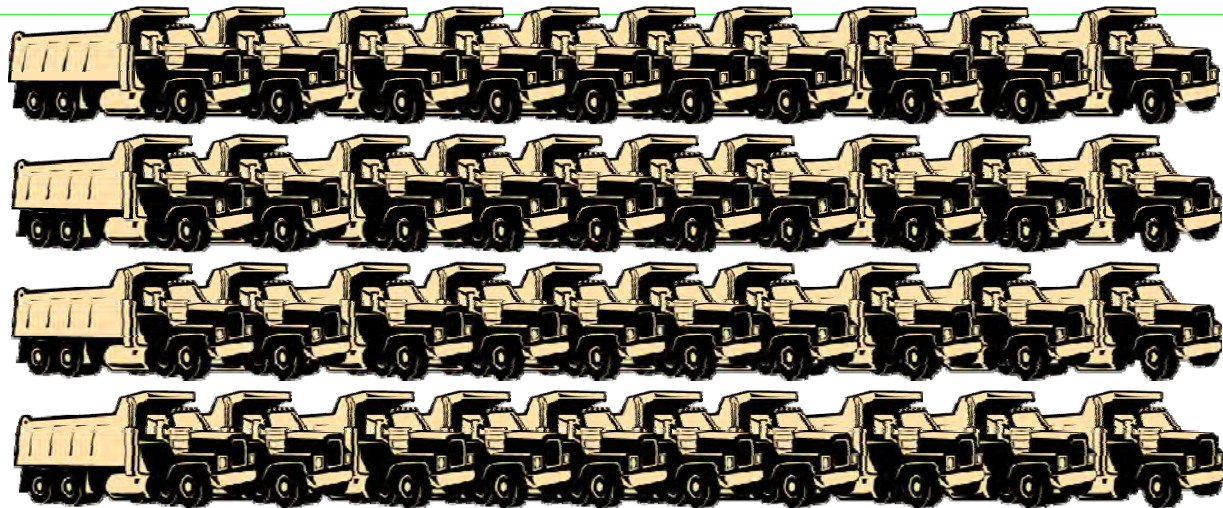
- TMDLS
 - Suspended Sediment, Turbidity and Organochlorine Pesticide
 - Temperature (2)
 - Fecal Coliform





Soil Savings

Subbasin	Acres Treated	Soil Savings (Per Acre Per Year)	Soil Savings Per Year
Wilson Creek	608	~1.0 to 1.6 tons	~600 to 970 tons



~5-7% of sediment load
in Wilson Creek



Matching Funds

- Yakima Tributary Access & Habitat Program
- Ecology Infrastructure
- USDA Natural Resources Conservation Service's Environmental Quality Incentives Program (EQIP)
 - Agricultural Water Enhancement Program



Questions?
